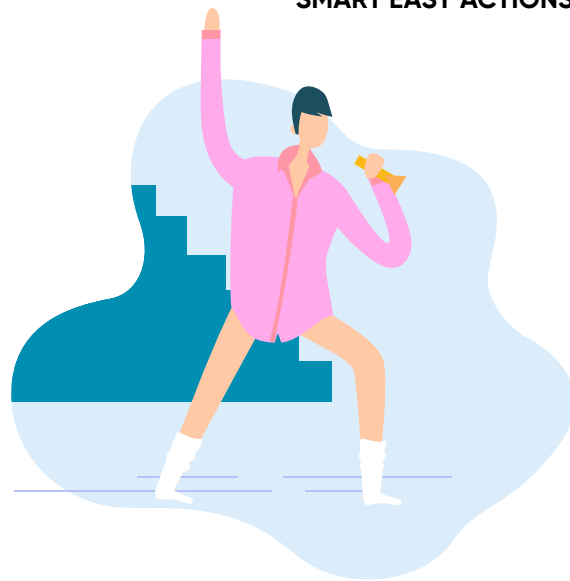


Risky Business

When you think of risky business, you probably think of the Tom Cruise film. So slide along with our CRUISE guide to understanding your risk profile for investments within your super.



Calculate

Understand what the different assets are (stocks, property, fixed interest, bonds, cash) and their associated risks.

Research

Learn about the performance of different assets historically, get a feel for the amount of volatility in that investment.

Understand

Using your knowledge of the types of investment and their historical cycles now decide – with the help of an adviser or smartCoach – what is going to work best for you as an individual.

Investigate

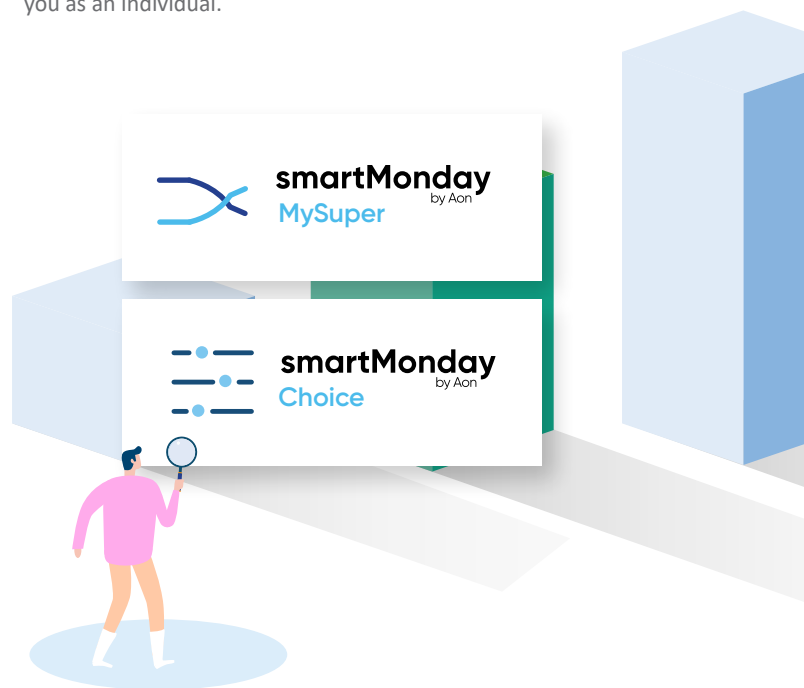
Which of the investment options on smartMonday's menu most closely align with where you want to go? Do you need to make a choice investment, or will the default **MySuper** cater for your needs?

Search

Picking the right investment is important, as is making sure you're not paying too much for it. Check out the fine print to understand the cost of embarking on a particular investment.

Evaluate

Markets change, historically low interest rates have impacted the yield of bonds and term deposits. Make sure your portfolio is right for you, right now.



smartMonday is a registered trading name of Aon Solutions Australia Limited ABN 48 002 288 646 AFSL 236667 (Aon), the sponsor of the Aon Master Trust ABN 68 964 712 340 (the Fund). The trustee of the Fund is Equity Trustees Superannuation Limited ABN 50 055 641 757 AFSL 229757 RSE Licence L0001458. This document has been prepared by Aon on behalf of the Trustee. smartMonday PRIME, smartMonday DIRECT and smartMonday PENSION products are part of the Fund.

Aon has taken care in the production of this document, the contents of which has been obtained from sources that it believes to be reliable. To the extent permitted by the law, Aon does not warrant, represent or guarantee the accuracy, adequacy, completeness or fitness for any purpose that this document may be used and accepts no liability for any loss incurred by anyone who relies on it. Past performance should not be considered a guide to future performance.

The information in this document is general in nature and should not be relied upon as personal advice as your personal needs, objectives and financial situation have not been considered. Before deciding whether a particular product is right for you, please consider the relevant Product Disclosure Statement or speak with your financial adviser. If you do not have a financial adviser, contact us to ask about the intra-fund advice services you can access through your membership.

© 2020 Aon Solutions Australia Limited

SBSM0085 P 0720